

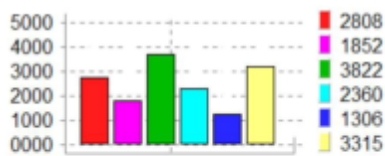
BioField Imager Examples

Quick Guide: Applications and Examples

Before: the eye can see red areas where pain is (left side upper back/neck and left side lower back) shown here as congested light/energy

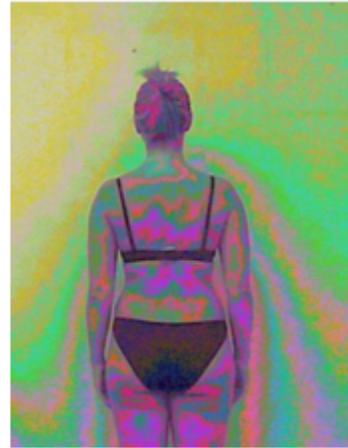


COLOUR DATA CHART

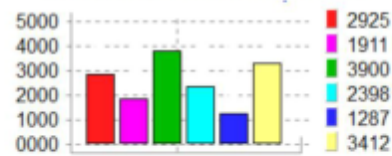


Colour Frequency Data Before Reiki healing

After: the eye can see less red and more green (balance) in previously painful areas (left side upper back/neck and left side lower back).



COLOUR DATA CHART



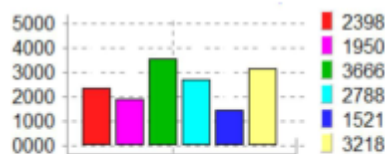
Green (balance) cyan (balance) increased. Red can be seen to increase if scan taken immediately after healing (as this was) but then can settle to lower values.

Colour Frequency Data After Reiki healing



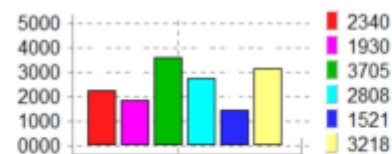
Before: the eye can see red areas where pain is around thumb and on congested meridians on back of hand and lower forearm shown here as congested light/energy

COLOUR DATA CHART



After: the eye can see less red and more green (balance) in previously painful areas around thumb and on back of hand and lower forearm

COLOUR DATA CHART



Green (balance) cyan (balance) increased. Red and magenta (congestion) are seen to decrease.

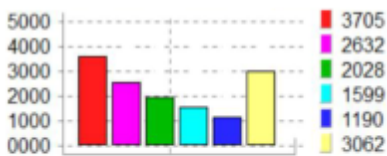
BioField Imager Examples

Quick Guide: Applications and Examples continued

Before Harmonising device applied.
Electro-magnetic field (EMF) around power point.
The eye can see a great deal of red light and an inharmonious field around the socket



COLOUR DATA CHART

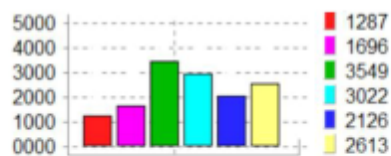


Colour Frequency Data Before EMF harmoniser

With Harmonising device applied.
Now there is a great deal of green light/energy creating a more balanced field.



COLOUR DATA CHART



Green (balance) cyan (balance) increased. Red and magenta (congestion/dish armony) greatly reduced

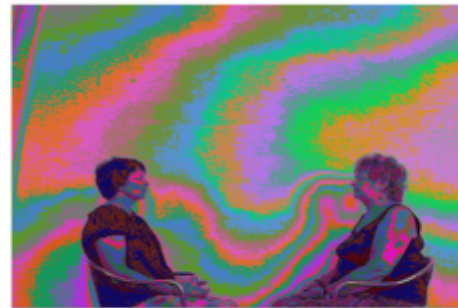
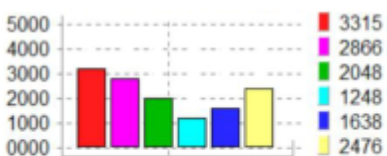
Colour Frequency Data with EMF harmoniser



Before energy connection made between women who often work together clearing negative energy from around people and places

Colour Frequency Data Before energy connection

COLOUR DATA CHART



After connection made between women. Note increased vital/potent energy (red) to brow of woman on left and in front of throat of woman on right

Colour Frequency Data After energy connection

COLOUR DATA CHART

