

# NON-LOCAL AND LOCAL CHARGING OF WATER

**Date of Observation:** 26 December 2022

**Equipment:** Biofield Imaging Program, [enquiries@resolutions.org.uk](mailto:enquiries@resolutions.org.uk); c922 ProStream Video Camera by Logitech

**Settings:** Full Spectrum Background Lighting; High Definition setting: MAJOR TYPE VIDEO-SUBTYPE YUY2 1024 X 576, 16 bits; set at defocus point of 25/250; Low Light Compensation set: ON; Backlight Compensation: 1; all other setting are at default setting.

**Meditation Background Music:** Test background music was acquired through license purchase of Rebecca Reads Binaural Beats Soundtrack “Wildflower.wav” designed to contribute to an Alpha Brainwave state during meditation. Wildflower.wav was played during the entire meditation sequence.

**Synopsis:** Using the Masaru Emoto protocol to emplace intention in waters, a sequential intentions meditation was done with the expressed intention to supercharge Healing information end state instructions within three containers of water. One container was local and in my immediate presence. Two other containers were non-local in nature. One container was in Singapore and the other was located in the San Francisco Bay area. Effectively, two containers were going to be distant influence while the other would be in my immediate contact. Indeed, I would place my hands on the container during the entire meditation that lasted about 10 minutes. All images and videos are only of the gallon of water at my location. For obvious reasons, I was unable to video distance influenced containers.

## **Intention Goals:**

1. Supercharge all three containers to 2000% of a normal healing energy/information state.
2. Imprint the Intentions RECOVERED, REJUVENATED, RESTORED, HEALED, EMPOWERED, STRENGTHENED, and RENEWED

**Discovery Effects:** An initial comparison of “energy states” videoed prior to the meditation and immediately after the meditation suggest an energy charge might have been imprinted within the gallon of water. Comparisons were conducted by utilizing two video filters ( F1 and F9) within the Biofield Imaging equipment to identify specific frequency changes. Further testing will be necessary to insure energy levels are changed and appropriately identified within the container.

## **Contents:**

- Synopsis, Intentions, Discovery effects
- F1 FILTER IMAGING
- F9 FILTER IMAGING

Page 1 of 3

Page 2 of 3

Page 3 of 3

These products were created by the Mary Magdalene Wellness Center. For further information contact: Craig Hendricks, [hkimcraig90@gmail.com](mailto:hkimcraig90@gmail.com); 619-709-1980. Any use of this information is permissible with my authorization. Please contact me for any further information.

# F1 FILTER

BEFORE CHARGING



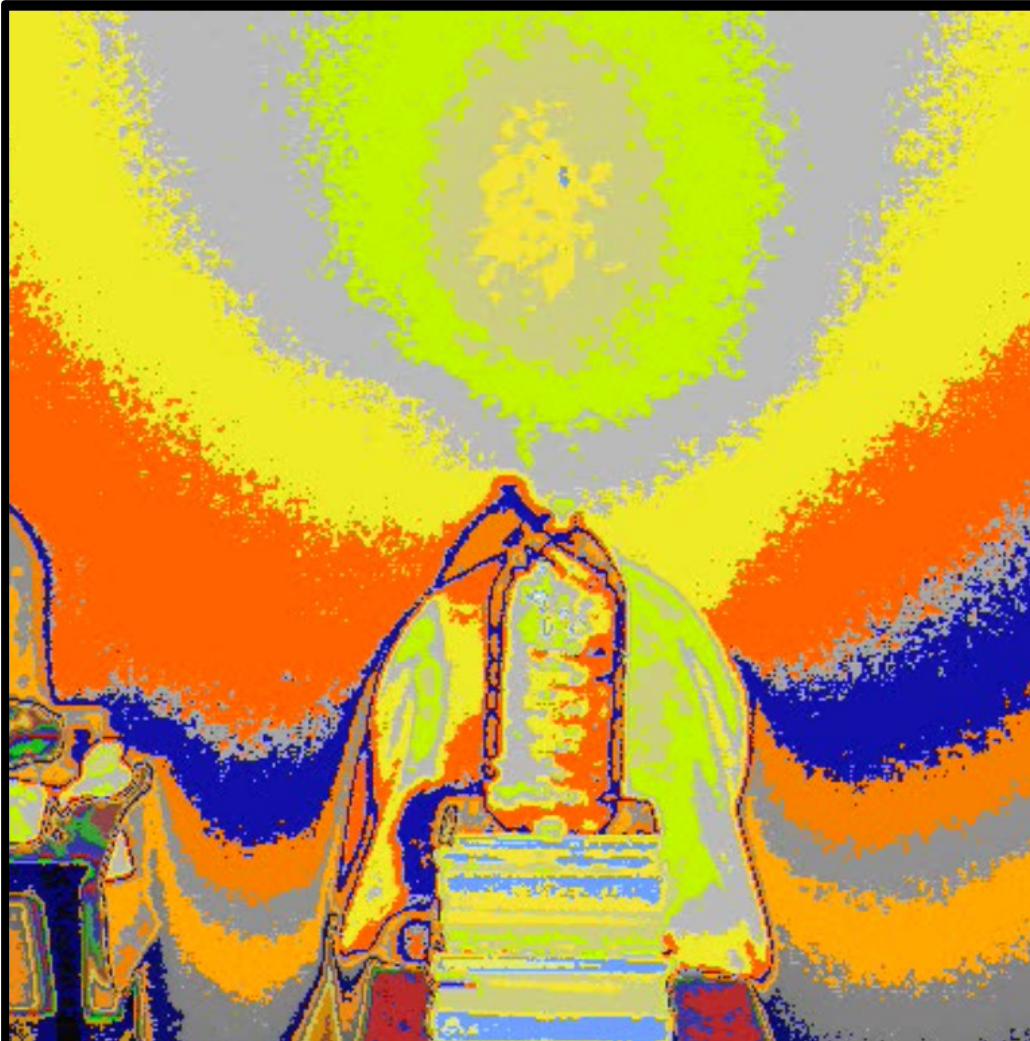
AFTER CHARGING





# F9 FILTER

BEFORE CHARGING



AFTER CHARGING

