

Quick Guide for Mac users

Installing your Biofield Imager or Biofield Reader

This is a quick general guide to installation of the Licence Key versions of our software on Mac. Computers may vary - depending on how they are configured.

The software works within a Windows compartment on Mac. We use Parallels.

The dongle version of our software is not compatible with Mac OSX.

Congratulations!

You have successfully purchased Biofield Imager with CopyMinder (CM) Licence Key Security.

Thank you for your order.

We are pleased to say that you can now download your BFI program.

Click 'Download File' and the file will be transferred to your computer.

Biofield Imager BFI



When you have downloaded, undo the zip file to extract the installer folder and install the program by clicking on the 'BFI install' icon.

After you have installed, you will need the Licence Key and to be online for the first run and you will also be asked to enter a couple of details.

Congratulations!

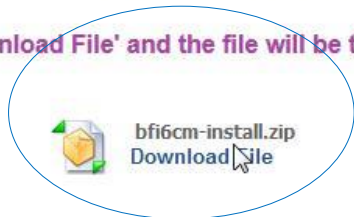
You have successfully purchased Biofield Imager with CopyMinder (CM) Licence Key Security.

Thank you for your order.

We are pleased to say that you can now download your BFI program.

Click 'Download File' and the file will be transferred to your computer.

Biofield Imager BFI



When you have downloaded, undo the zip file to extract the installer folder and install the program by clicking on the 'BFI install' icon.

Go to link which either we sent you or, which you were taken to once you had paid by PayPal.

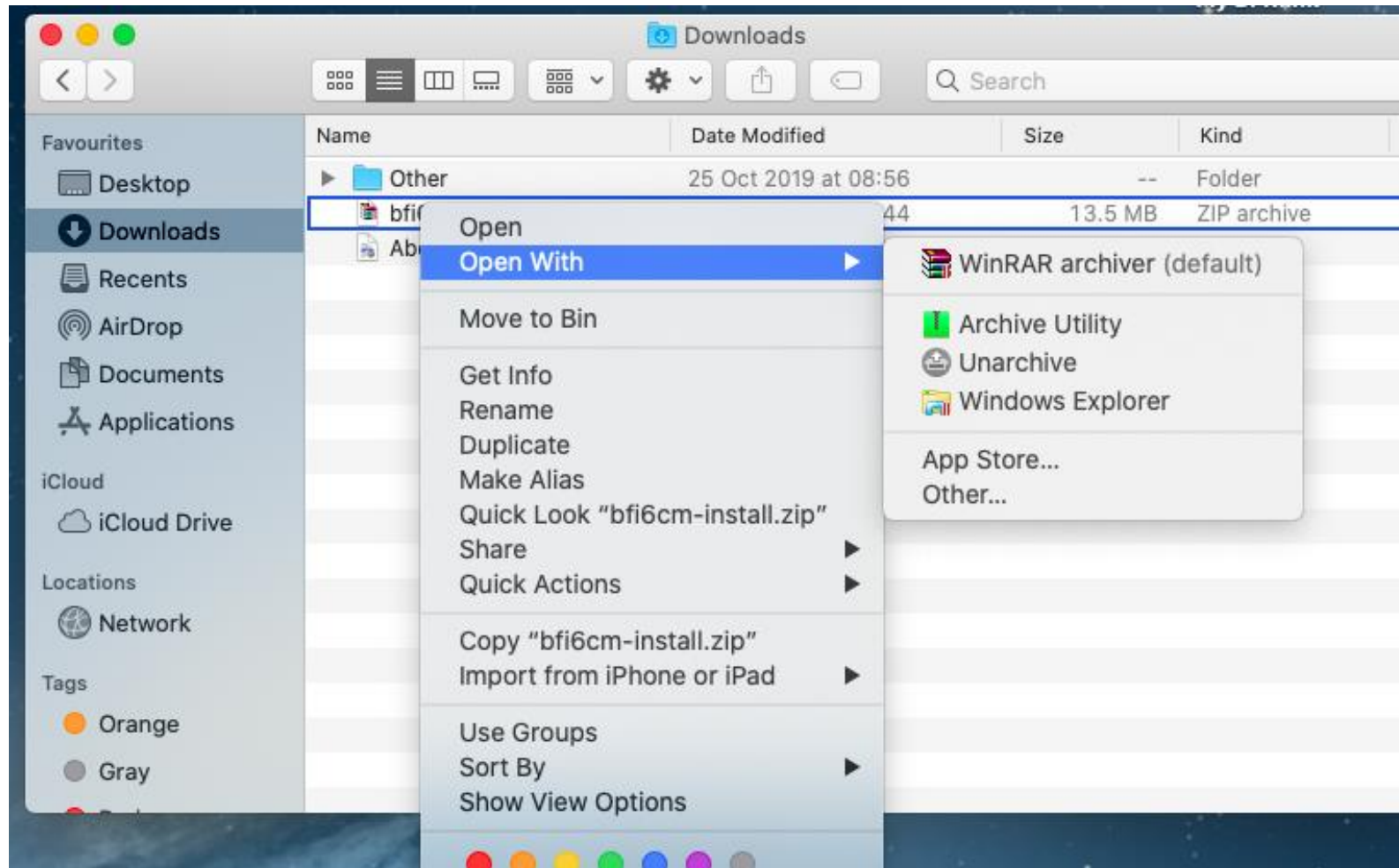
For Mac this could be either BFR8CM or BFI6CM files – the process is for installing is the same.

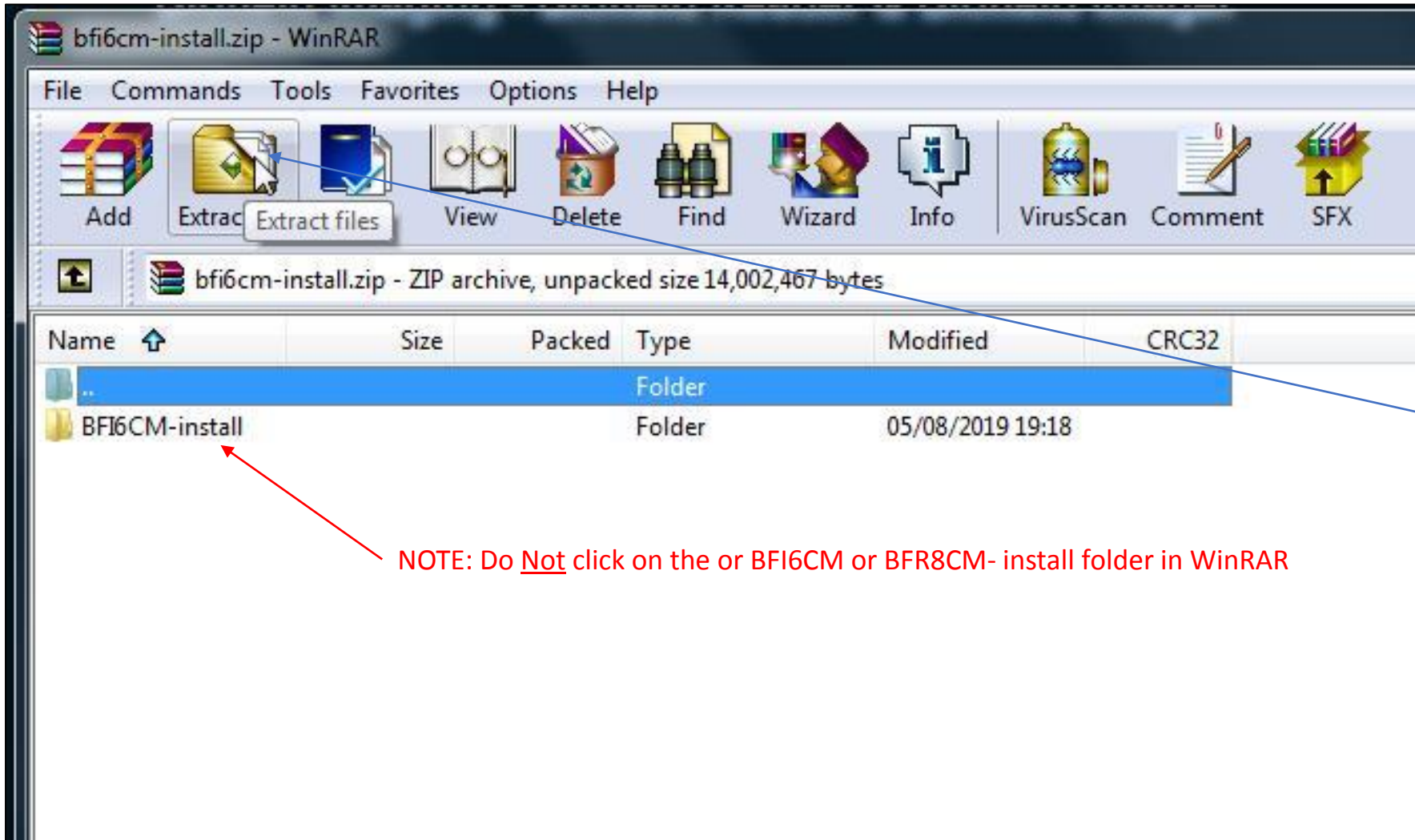
Click to download file

Look for the BFR8CM or BFI6CM zip file in the Downloads folder on Mac.
The zip file icon may look like a pile of books followed by the name of the file.
Some computers may have different icons for .zip files.



We use WinRAR and have made it our default. This software opens the zip. See below.



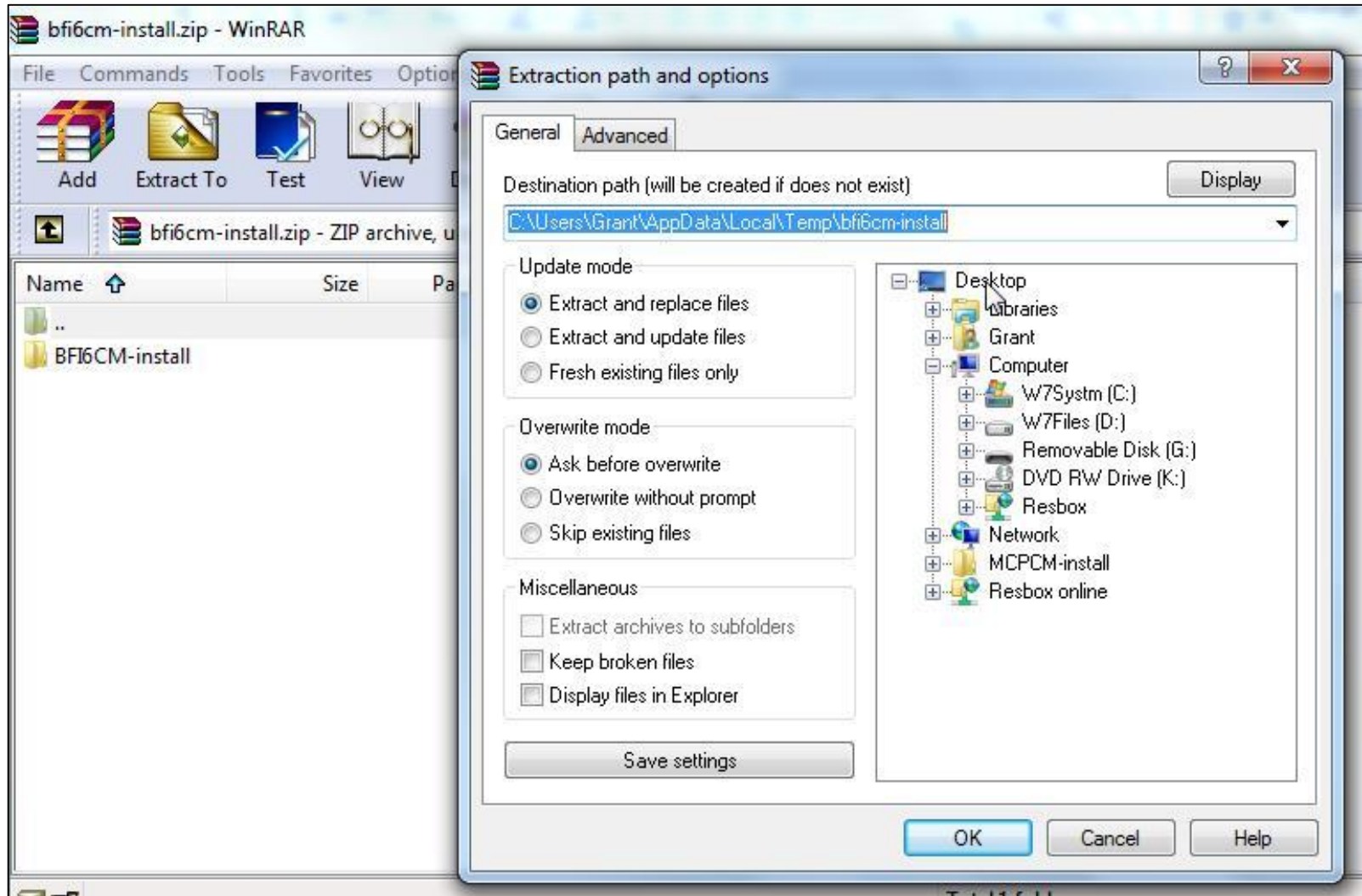


WinRAR will unzip the files

WinRAR has opened the Zip file in a folder.
Click on 'Extract files' on top tool bar.

NOTE: Do Not click on the or BFI6CM or BFR8CM- install folder in WinRAR

You cannot start installing your biofield imaging program until the files are saved onto your computer. Once located on your computer you can install your BFR or BFI program.



Choose your destination path – or note where program may put the files.

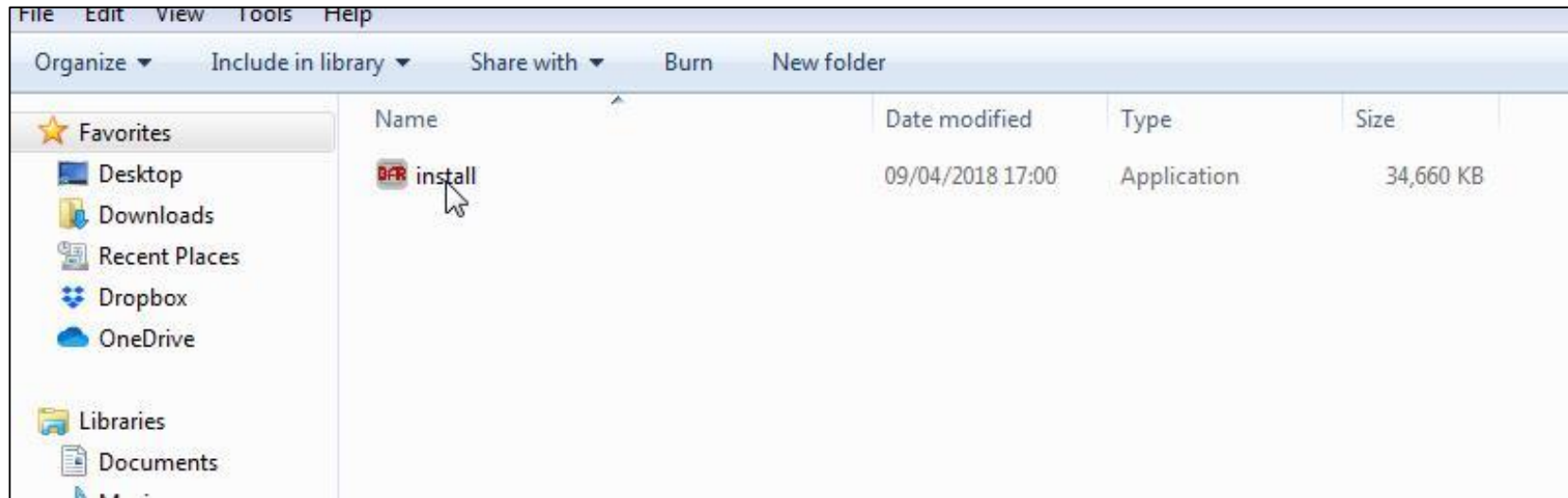
You need to extract to within your Windows compartment as the software works with Windows and is not compatible with Mac OSX.

For demonstration purposes we have chosen the desktop on Windows but you can navigate to wherever you want within Windows.



BFR or BFI install folder on desktop in Windows.

Double click on folder to open it.



Double click on BFR/BFI install to start installation.

Follow prompts.

Make sure you do a 'Full installation' as this will ensure that all necessary files are installed.

Files are saved as default to: C:\Program Files (x86)\BFRCM/BFICM

Folders for saving images etc can be found on (C:) My BFR or My Work Folder (for BFI)

We have found that on Mac we have had to create our own shortcut to the program on the desktop.

It is not usually generated through the installation process - even though you may have chosen to create this when installing.

After installation, open the program.

You need to be connected to the internet/Wi-Fi.

A dialog box will appear so that you can register the program. Just follow the prompts, enter the Licence Key we sent you and fill in a few details.

You will need to be connected to the internet when using your program as it requires regular access to the internet (for security checks) and is for use on one computer only.

Once registered your program will open.

Whilst we are happy to help our customers with the use and functionality of our programs we are not always able to help with specific issues you may have on your computer. This is because, at a distance, it is very difficult for us to know how your computer is configured.

The vast majority of our customers manage to install our software with no assistance from us.

If you are experiencing problems with installing your software, we recommend that you consult someone who has more experience with computers.