

Quick Guide

Installing Biofield Imager or Biofield Reader on Windows OS

This is a quick general guide to installation of the Dongle Protection (DP) and Licence Key (CM) versions of our software on Windows operating systems.

Computers may vary - depending on how they are configured. Your computer may download and unzip files in a different way than we show here.

This Guide is not for Mac users who have Windows compartments. See [Guide to Installation for Mac Users](#)

Home About Us Products About BFR Training Gallery Paranormal News Contact Us Research Videos



Congratulations!

You have successfully purchased BioField Reader8 with Dongle Protection (DP).

Thank you for your order.

We are pleased to say that you can now download your BFR8DP program.

Click 'Download File' and the file will be transferred to your computer.

 bfr8dp-install.zip
Download File

When you have downloaded, undo the zip file to extract the installer folder and install the program by clicking on the 'BFR install' icon.

Go to link which we sent you or, which you were taken to once you had paid by PayPal.

The installation process is the same whether you have a Licence Key version of Biofield Reader/Biofield Imager or Dongle version of Biofield Reader.

Home About Us Products About BFR Training Gallery Paranormal News Contact Us Research Videos

Congratulations!

You have successfully purchased BioField Reader8 with Dongle Protection (DP).

Thank you for your order.

We are pleased to say that you can now download your BFR8DP program.

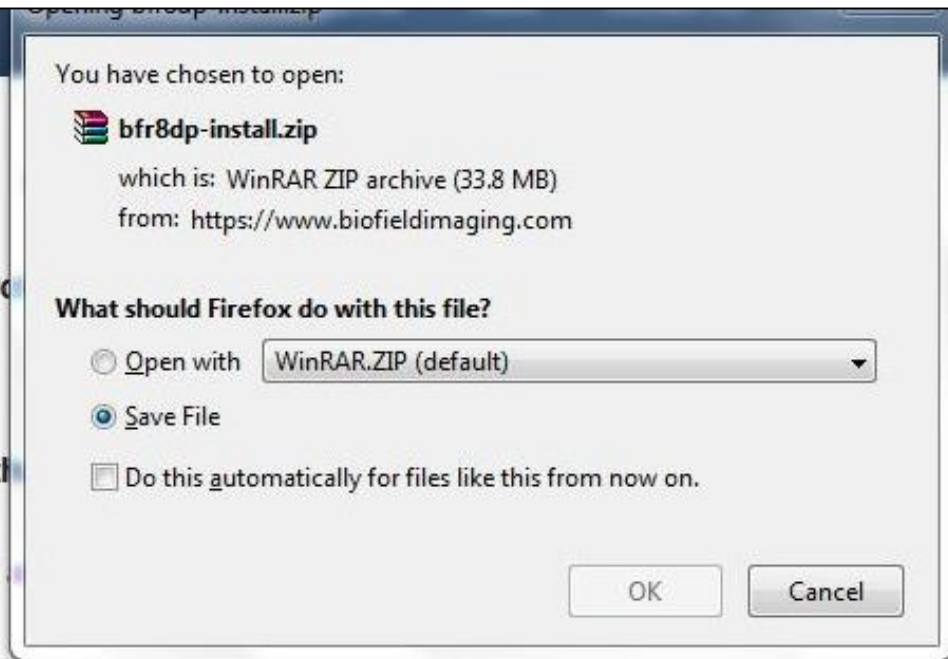
Click 'Download File' and the file will be transferred to your computer.

 bfr8dp-install.zip
Download File

When you have downloaded, undo the zip file to extract the installer folder and install the program by clicking on the 'BFR install' icon.

After you have installed, you will need the dongle plugged into a USB port on your computer for the program to run.

Click to download file



You have successfully purchased

We are pleased to say that

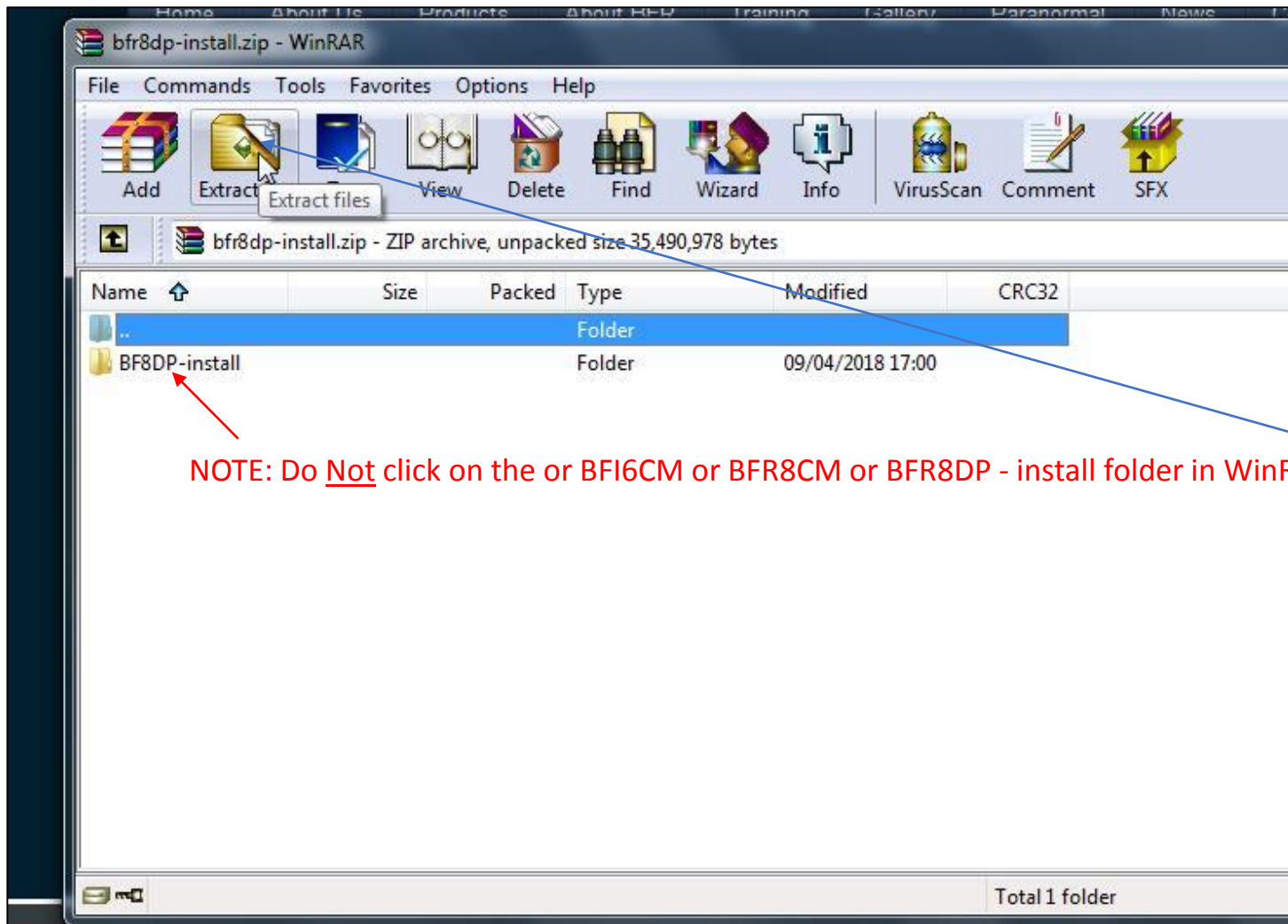
Click 'Download File'



bfr8dp-install.zip
Download File

When you have downloaded, undo the zip file to extract the installer folder and install the program by clicking on the 'BFR install' icon.

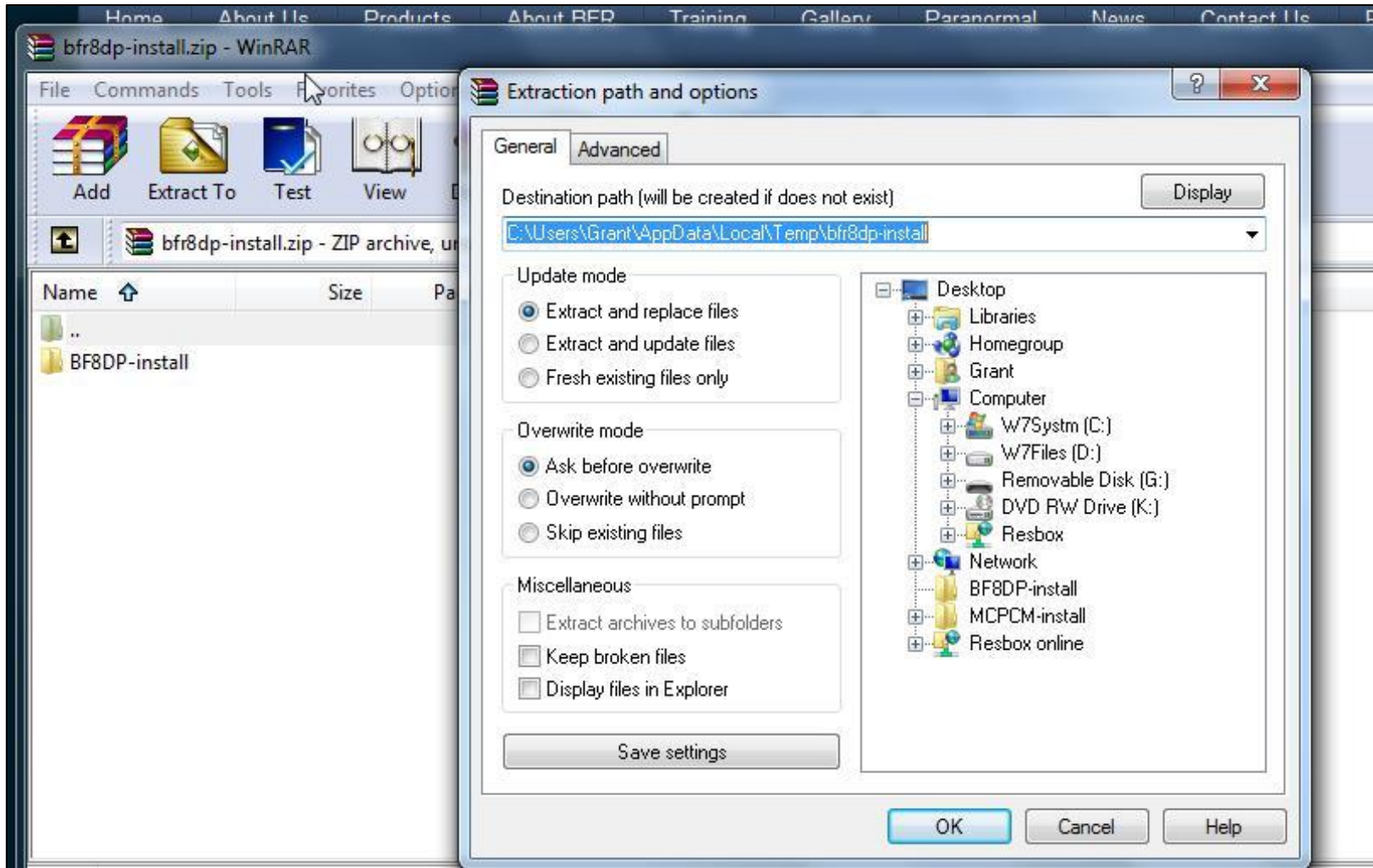
Dialog box opens
Click on 'Save file'.
We use WinRAR.ZIP program to unzip files.
Then click 'OK'



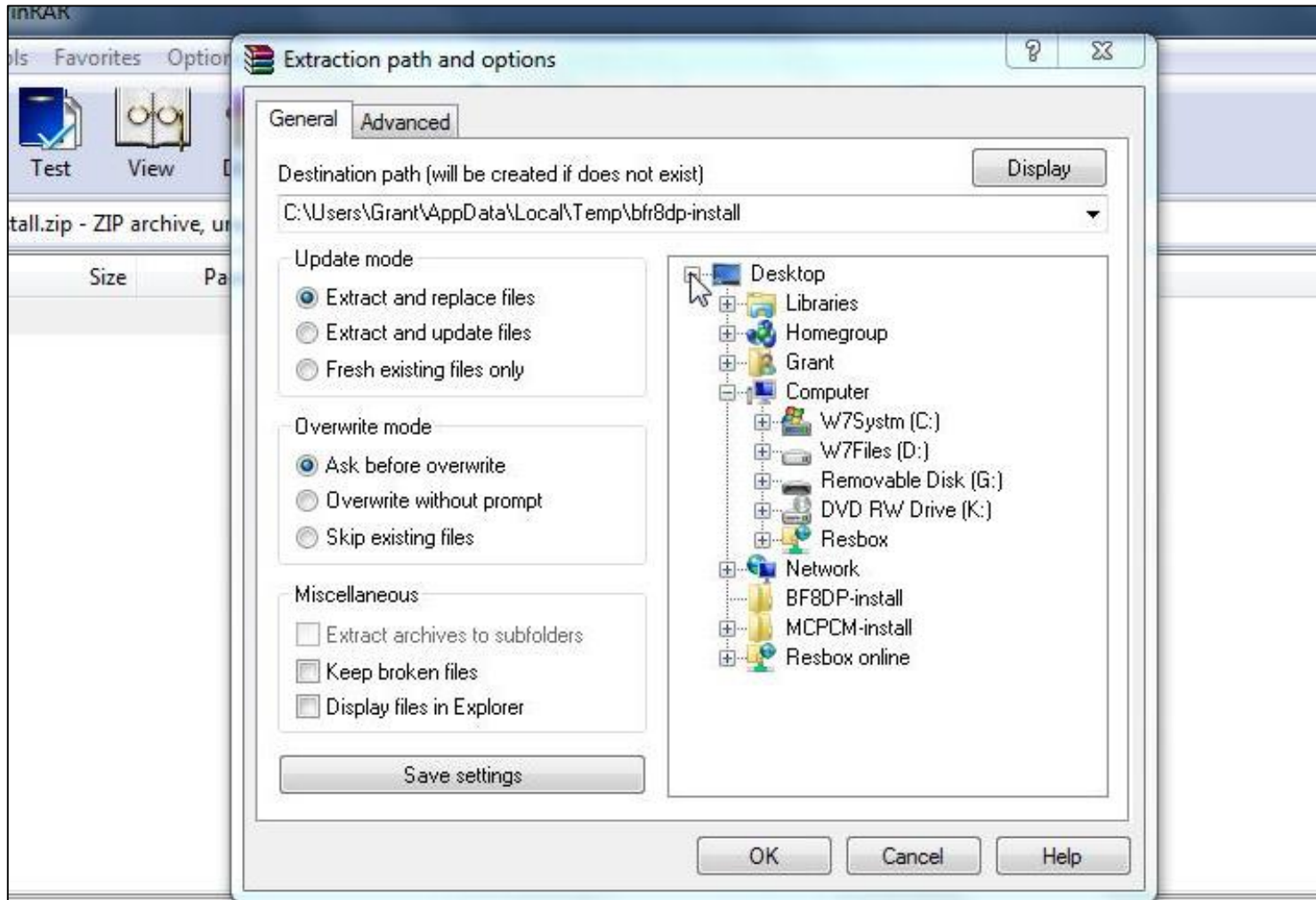
WinRAR has opened the Zip file in a folder.

Click on 'Extract files' on top tool bar.

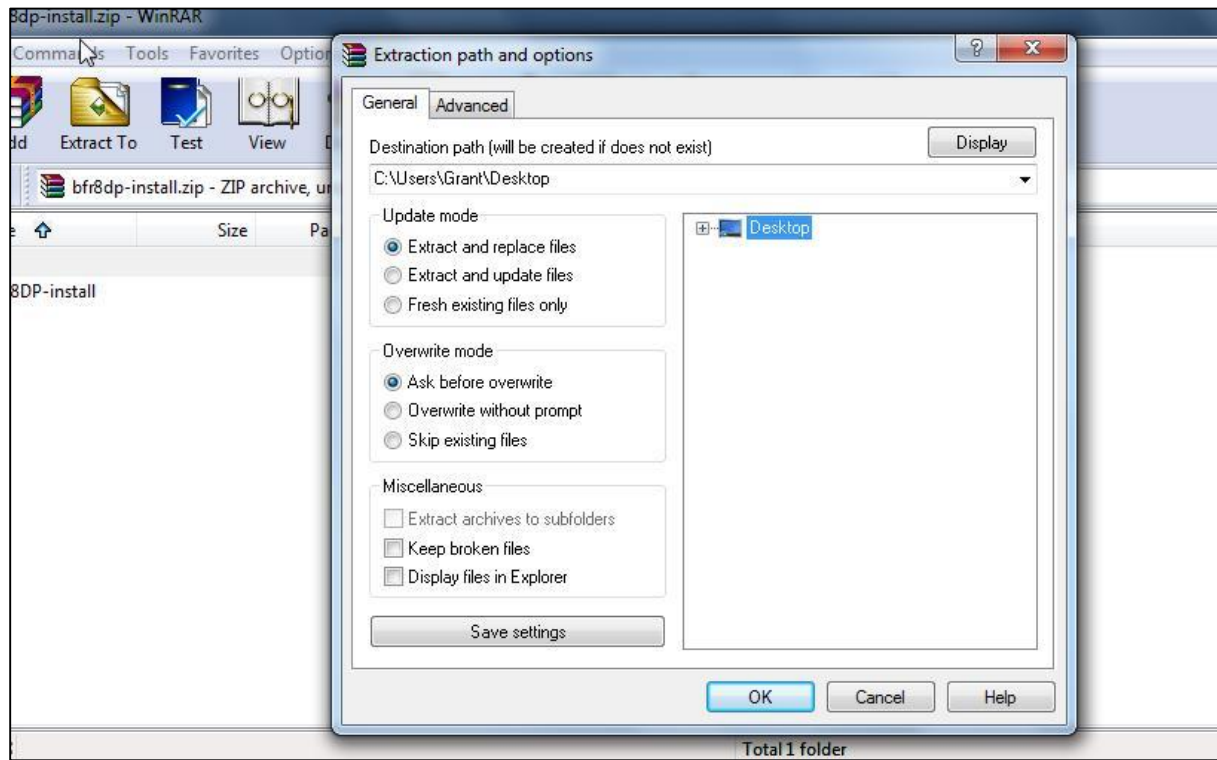
You cannot start installing your biofield imaging program until the files are saved onto your computer. Once located on your computer you can install your BFR or BFI program.



Choose your destination path – or note where program may put the files. (Destination Path).



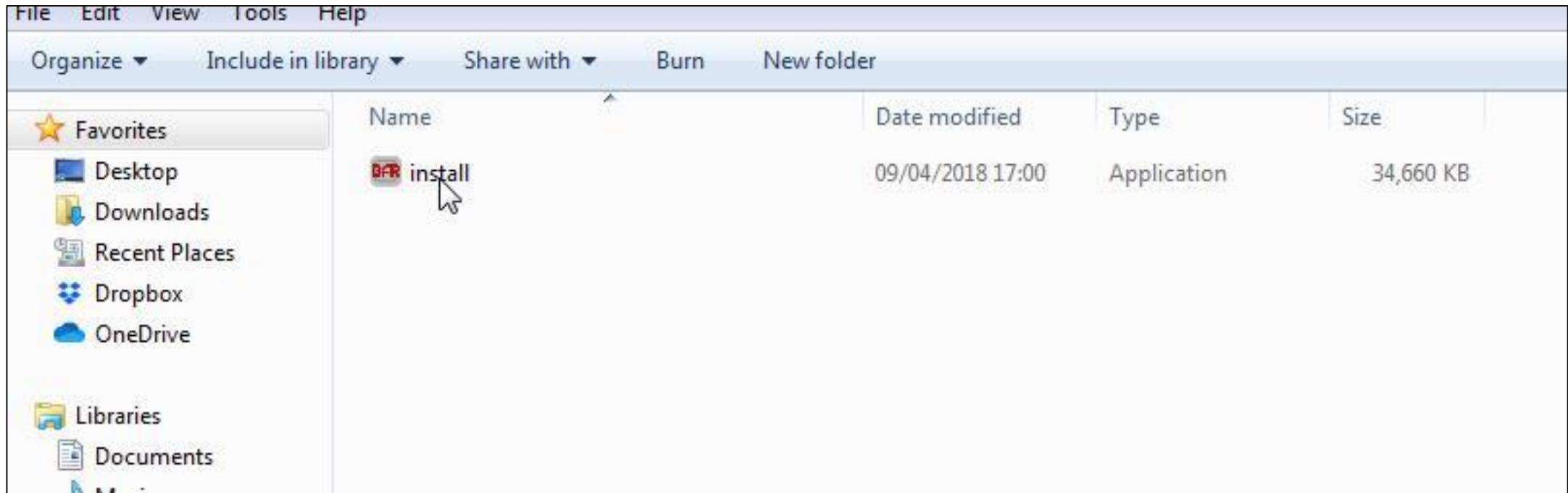
For demonstration purposes only, we have chosen the desktop. (You may wish to put it in a dedicated folder).



Showing desktop has been chosen. Click OK.



BFR/BFI install folder on desktop.
Double click to open.



Double click on BFR install to start installation.
Follow prompts.

Most users click to create a desk top icon during this process.

Make sure you do a 'Full installation' as this will ensure that all necessary files are installed.

Files are saved as default to: C:\Program Files (x86)\BFRCM/BFICM

Folders for saving images etc can be found on (C:) My BFR/My Work Folder (for BFI)

After installation, open the program.

For Licence Key version you need to be connected to the internet/Wi-Fi.

A dialog box will appear so that you can register the program. Just follow the prompts, enter the Licence Key we sent you and fill in a few details.

You will need to be connected to the internet when using your program as it requires regular access to the internet (for security checks) and is for use on one computer only.

Once registered your program will open.

For Dongle version you will need to insert your dongle which allows the program to run. The prompt will say, 'A valid dongle for Biofield Reader has not been detected'.

Once the dongle is inserted into USB port a dialog box will appear to let you know that Protection check was successful, and the program will open.

You can download the BFR program onto as many computers as you like, but it will need the dongle to be plugged in each time for it to run.

Customer Support

Whilst we are happy to help our customers with the use and functionality of our programs, we are not always able to help with specific issues you may have on your computer. This is because, at a distance, it is very difficult for us to know how your computer is configured.

The vast majority of our customers manage to install our software with no assistance from us.

If you are experiencing problems with installing your software, we recommend that you consult someone who has more experience with computers.